

Sample Received: 9/15/2020 Report Date: 9/17/2020 Report: 11128

CHERRY ABACUS A 9/3

Potency Analysis Report

Sample: 70629H-P PLANTS

Item Notes:

METRC No. 1A4000D00037D5D000000436

Batch: Cherry Abacus A 9/3

CANNABINOID LEVELS

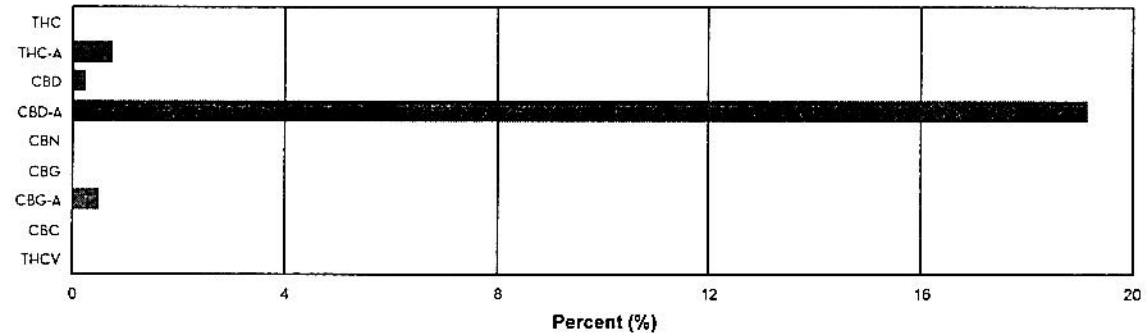
	%	mg/gram
THC	N/D	N/D
THC-A	0.77	7.65
CBD	0.24	2.42
CBD-A	19.15	191.53
CBN	N/D	N/D
CBG	< LLOQ	< LLOQ
CBG-A	0.51	5.10
CBC	< LLOQ	< LLOQ
THCV	N/D	N/D
Total	20.67	206.70

TOTAL THC*: 0.67 %

THC + THC-A*: % by weight

TOTAL CBD*: 17.04 %

CBD + CBD-A*: % by weight



ADDITIONAL INFORMATION

**THC Conversion 0.00%

**CBD Conversion 1.25%

*Total THC is calculated using the equation $THC + (THC-A \cdot 0.877)$. This accounts for the weight lost by THC-A when it is decarboxylated to become active THC. An equivalent formula is used to determine Total CBD.

**THC/CBD Conversion indicates the percentage of total cannabinoid that was already converted to active cannabinoid at the time of testing. 100% indicates that all cannabinoid present was in the active, decarboxylated form at the time of testing.

N/D = Not Detected. The level of analyte was below the detection threshold for this test.

LLOQ = Lower Limit of Quantitation. <LLOQ signifies that the analyte was detected at a concentration below the calibrated range of the method and could not be accurately measured.

Authorized by: Roy Turton, Lab Director

Page 15 of 28

ISO/IEC 17025:2017



Sample Received: 9/15/2020 Report Date: 9/17/2020 Report: 11128

CHERRY ABACUS A 9/3

Terpenes Analysis Report

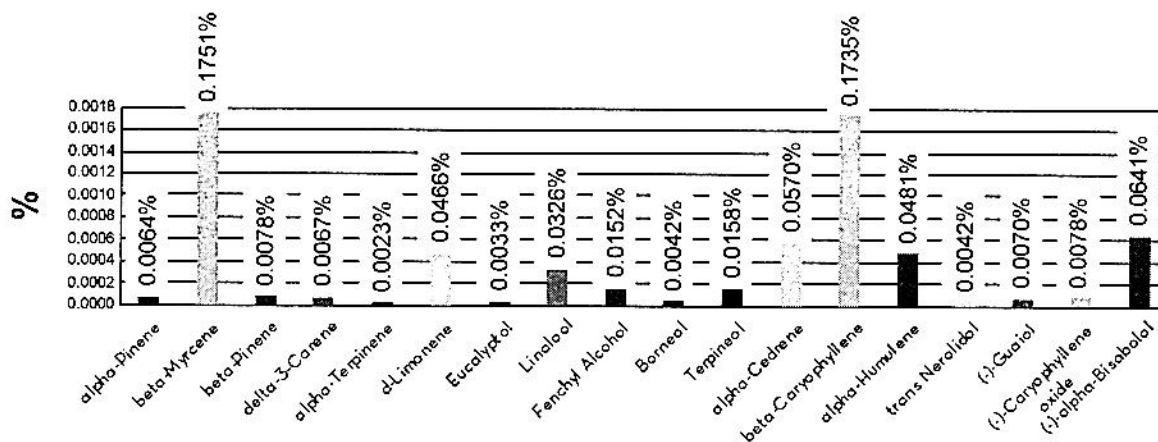
Sample: 70629H-P PLANTS

Item Notes:

METRC No. 1A4000D00037D5D000000436

Batch: Cherry Abacus A 9/3

TOTAL TERPENES: 0.6815313%**



Measured Concentration in Weight Percent by GC Analysis

RESULTS

Alpha-Pinene 0.0064	Camphene < LLOQ
Sabinane N/D	Beta-Myrcene 0.1751
Beta-Pinene 0.0078	Alpha-Phellandrene N/D
Delta-3-Carene 0.0067	Alpha-Terpinene 0.0023
Ocimene N/D	D-Limonene 0.0466
P-Cymene N/D	Beta-Ocimene < LLOQ
Eucalyptol 0.0033	Gamma-Terpinene N/D
Terpinolene N/D	Linalool 0.0326
Fenchone N/D	Fenchyl Alcohol 0.0152
neg_Isopulegol N/D	Camphar N/D
iso-Borneol N/D	Hexahydrothymol N/D
Borneol 0.0042	Terpineol 0.0158
Gamma-Terpineol N/D	Geraniol N/D
Pulegone N/D	Geranyl Acetate < LLOQ
alpha-Cedrene 0.0570	Beta-Caryophyllene 0.1735
Alpha-Humulene 0.0481	Valencene N/D
cis-Neralidol N/D	trans-Neralidol 0.0042
neg_Guaiol 0.0070	neg_Caryophyllene oxide 0.0078
Cedrol N/D	neg_alpha-Bisabolol 0.0641

N/D = Not Detected. The level of analyte was below the detection threshold for this test.

LLOQ = Lower Limit of Quantitation. <LLOQ signifies that the analyte was detected at a concentration below the calibrated range of the method and could not be accurately measured.

ULOQ = Upper Limit of Quantitation. >ULOQ signifies that the analyte was detected at a concentration above the calibrated range of the method and could not be accurately measured.

* This value is above the ULOQ. This value is an approximation of the true concentration and should only be used as an estimate.

**Total Terpenes = The sum of the individual terpene concentrations present in the sample, including the terpenes with estimated concentrations (>ULOQ and <LLOQ).

Authorized by: Roy Turton, Lab Director

Page 17 of 28