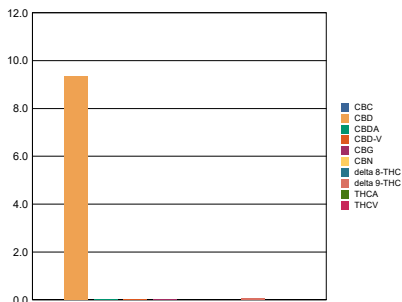


Sample Information			RS (GCMS-MS)	ppm	RL	Terpenes (HPLC)	mg/mL	%
Sample Identification	500mg Full Spec		Compound			Compound		
Laboratory Number	1910264-01		Acetone	NT	NT	alpha-Bisabolol	NT	NT
Batch Number	1/500FS		Acetonitrile	NT	NT	(-)-Borneol and (+)-Borneol	NT	NT
Matrix	Tincture		Benzene	NT	NT	Camphene	NT	NT
Cannabinoid (HPLC)			n-Butane	NT	NT	Camphor	NT	NT
Compound	%	mg/mL	Carbon Tetrachloride	NT	NT	beta-Caryophyllene	NT	NT
THCA	ND	ND	Chloroform	NT	NT	trans-Caryophyllene	NT	NT
delta 9-THC	0.07	0.657	1,2-Dichloroethane	NT	NT	Caryophyllene Oxide	NT	NT
delta 8-THC	ND	ND	Ethanol	NT	NT	alpha-Cedrene	NT	NT
THCV	ND	ND	Ethyl acetate	NT	NT	Cedrol	NT	NT
CBDA	0.02	0.215	Ethylene oxide	NT	NT	Endo-fenchyl Alcohol	NT	NT
CBD	9.33	93.3	n-Heptane	NT	NT	Eucalyptol	NT	NT
CBD-V	0.03	0.341	n-Hexane	NT	NT	Fenchone	NT	NT
CBN	ND	ND	iso-Butane	NT	NT	Geraniol	NT	NT
CBG	0.03	0.258	iso-Pentane	NT	NT	Geranyl acetate	NT	NT
CBC	ND	ND	Methylene Chloride	NT	NT	Guaiol	NT	NT
Cannabinoids Total			n-Pentane	NT	NT	Hexahydrothymol	NT	NT
Max Active THC	0.07	0.66	Propane	NT	NT	alpha-Humulene	NT	NT
Max Active CBD	9.35	93.49	2-Propanol (IPA)	NT	NT	Isoborneol	NT	NT
T.Active Cannabinoids	9.42	94.20	Tetrahydrofuran	NT	NT	Isopulegol	NT	NT
Total Cannabinoids	9.47	94.70	Toluene	NT	NT	Limonene	NT	NT
Max Active Ratios			Trichloroethane	NT	NT	Linalool	NT	NT
142.30 : 1 CBD to THC			o-xylene	NT	NT	p-Mentha-1,5-diene	NT	NT
0.01 :1 THC to CBD			Xylenes (m,p)	NT	NT	beta-Myrcene	NT	NT

Cannabinoid (%)



Sample Image

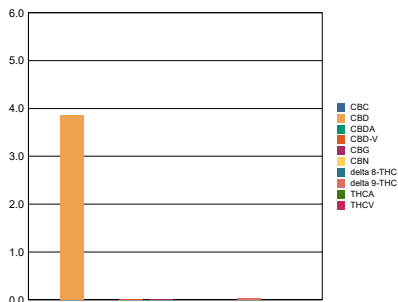


Metals	ppm	RL
Compound		
Arsenic	NT	NT
Cadmium	NT	NT
Mercury	NT	NT
Lead	NT	NT
Percent Moisture		
NT %		
Water Activity		
NT		

RL = Reporting Limit
 NA = Not Applicable
 NT = Not Tested
 ND = Non Detected

Sample Information			RS (GCMS-MS)	ppm	RL	Terpenes (HPLC)	mg/mL	%
Sample Identification	1000 mg Full Spec		Compound			Compound		
Laboratory Number	1910264-02		Acetone	NT	NT	alpha-Bisabolol	NT	NT
Batch Number	1/1000FS		Acetonitrile	NT	NT	(-)-Borneol and (+)-Borneol	NT	NT
Matrix	Tincture		Benzene	NT	NT	Camphene	NT	NT
Cannabinoid (HPLC)			n-Butane	NT	NT	Camphor	NT	NT
Compound	%	mg/mL	Carbon Tetrachloride	NT	NT	beta-Caryophyllene	NT	NT
THCA	ND	ND	Chloroform	NT	NT	trans-Caryophyllene	NT	NT
delta 9-THC	0.05	0.450	1,2-Dichloroethane	NT	NT	Caryophyllene Oxide	NT	NT
delta 8-THC	ND	ND	Ethanol	NT	NT	alpha-Cedrene	NT	NT
THCV	ND	ND	Ethyl acetate	NT	NT	Cedrol	NT	NT
CBDA	ND	ND	Ethylene oxide	NT	NT	Endo-fenchyl Alcohol	NT	NT
CBD	3.87	38.7	n-Heptane	NT	NT	Eucalyptol	NT	NT
CBD-V	0.02	0.232	n-Hexane	NT	NT	Fenchone	NT	NT
CBN	0.003	0.030	iso-Butane	NT	NT	Geraniol	NT	NT
CBG	0.02	0.231	iso-Pentane	NT	NT	Geranyl acetate	NT	NT
CBC	ND	ND	Methylene Chloride	NT	NT	Guaiol	NT	NT
Cannabinoids Total			n-Pentane	NT	NT	Hexahydrothymol	NT	NT
Max Active THC	0.05	0.45	Propane	NT	NT	alpha-Humulene	NT	NT
Max Active CBD	3.87	38.70	2-Propanol (IPA)	NT	NT	Isoborneol	NT	NT
T.Active Cannabinoids	3.94	39.40	Tetrahydrofuran	NT	NT	Isopulegol	NT	NT
Total Cannabinoids	3.96	39.60	Toluene	NT	NT	Limonene	NT	NT
Max Active Ratios			Trichloroethane	NT	NT	Linalool	NT	NT
85.88 : 1 CBD to THC			o-xylene	NT	NT	p-Mentha-1,5-diene	NT	NT
0.01 :1 THC to CBD			Xylenes (m,p)	NT	NT	beta-Myrcene	NT	NT

Cannabinoid (%)



Sample Image



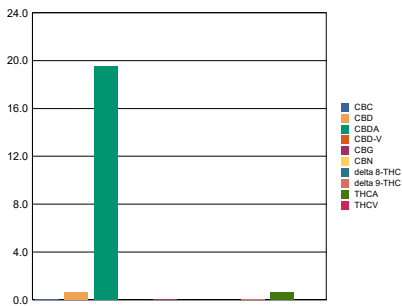
Metals	ppm	RL
Compound		
Arsenic	NT	NT
Cadmium	NT	NT
Mercury	NT	NT
Lead	NT	NT
Percent Moisture		
NT %		
Water Activity		
NT		

RL = Reporting Limit
 NA = Not Applicable
 NT = Not Tested
 ND = Non Detected

Sabinene	NT	NT
Sabinene Hydrate	NT	NT
gamma-Terpinene	NT	NT
alpha-Terpinene	NT	NT
alpha-Terpeneol	NT	NT
3-Carene	NT	NT
Ocimene Isomer 2	NT	NT
gamma-Terpeneol	NT	NT
Terpinolene	NT	NT
Valencene	NT	NT
Nerol	NT	NT
cis-Nerolidol	NT	NT
Total Terpenes	NT	NT

Sample Information			RS (GCMS-MS)	ppm	RL	Terpenes (HPLC)	%	mg/g
Sample Identification	Electra Flower		Compound			Compound		
Laboratory Number	1910264-03		Acetone	NT	NT	alpha-Bisabolol	NT	NT
Batch Number	2		Acetonitrile	NT	NT	(-)-Borneol and (+)-Borneol	NT	NT
Matrix	Flower		Benzene	NT	NT	Camphene	NT	NT
Cannabinoid (HPLC)			n-Butane	NT	NT	Camphor	NT	NT
Compound	%	mg/g	Carbon Tetrachloride	NT	NT	beta-Caryophyllene	NT	NT
THCA	0.66	6.6	Chloroform	NT	NT	trans-Caryophyllene	NT	NT
delta 9-THC	0.08	0.8	1,2-Dichloroethane	NT	NT	Caryophyllene Oxide	NT	NT
delta 8-THC	ND	ND	Ethanol	NT	NT	alpha-Cedrene	NT	NT
THCV	ND	ND	Ethyl acetate	NT	NT	Cedrol	NT	NT
CBD	19.58	195.8	Ethylene oxide	NT	NT	Endo-fenchyl Alcohol	NT	NT
CBD-V	ND	ND	n-Heptane	NT	NT	Eucalyptol	NT	NT
CBN	ND	ND	n-Hexane	NT	NT	Fenchone	NT	NT
CBG	0.10	1	iso-Butane	NT	NT	Geraniol	NT	NT
CBC	0.06	0.6	iso-Pentane	NT	NT	Geranyl acetate	NT	NT
Cannabinoids Total			Methylene Chloride	NT	NT	Guaiol	NT	NT
Max Active THC	0.66	6.53	n-Pentane	NT	NT	Hexahydrothymol	NT	NT
Max Active CBD	17.79	177.93	Propane	NT	NT	alpha-Humulene	NT	NT
T.Active Cannabinoids	0.82	8.24	2-Propanol (IPA)	NT	NT	Isoborneol	NT	NT
Total Cannabinoids	21.10	211.00	Tetrahydrofuran	NT	NT	Isopulegol	NT	NT
Max Active Ratios			Toluene	NT	NT	Limonene	NT	NT
27.47 : 1 CBD to THC			Trichloroethane	NT	NT	Linalool	NT	NT
0.04 :1 THC to CBD			o-xylene	NT	NT	p-Mentha-1,5-diene	NT	NT
			Xylenes (m,p)	NT	NT	beta-Myrcene	NT	NT
						trans-Nerolidol	NT	NT
						Ocimene Isomer 1	NT	NT
						alpha-Pinene	NT	NT
						beta-Pinene	NT	NT
						Pulegone	NT	NT
						Sabinene	NT	NT
						Sabinene Hydrate	NT	NT
						gamma-Terpinene	NT	NT
						alpha-Terpinene	NT	NT
						alpha-Terpineol	NT	NT
						3-Carene	NT	NT
						Ocimene Isomer 2	NT	NT
						gamma-Terpineol	NT	NT
						Terpinolene	NT	NT
						Valencene	NT	NT
						Nerol	NT	NT
						cis-Nerolidol	NT	NT
						Total Terpenes	NT	NT

Cannabinoid (%)

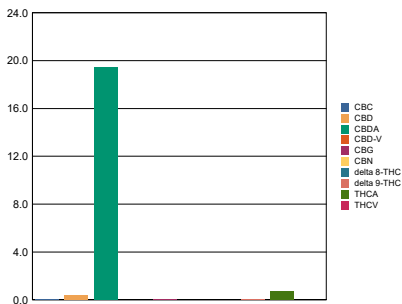


Metals	ppm	RL
Compound		
Arsenic	NT	NT
Cadmium	NT	NT
Mercury	NT	NT
Lead	NT	NT
Percent Moisture		
NT %		
Water Activity		
NT		

RL = Reporting Limit
 NA = Not Applicable
 NT = Not Tested
 ND = Non Detected

Sample Information			RS (GCMS-MS)	ppm	RL	Terpenes (HPLC)	%	mg/g
Sample Identification	Indoor Lifter Flower		Compound			Compound		
Laboratory Number	1910264-04		Acetone	NT	NT	alpha-Bisabolol	NT	NT
Batch Number	2		Acetonitrile	NT	NT	(-)-Borneol and (+)-Borneol	NT	NT
Matrix	Flower		Benzene	NT	NT	Camphene	NT	NT
Cannabinoid (HPLC)			n-Butane	NT	NT	Camphor	NT	NT
Compound	%	mg/g	Carbon Tetrachloride	NT	NT	beta-Caryophyllene	NT	NT
THCA	0.76	7.6	Chloroform	NT	NT	trans-Caryophyllene	NT	NT
delta 9-THC	0.05	0.5	1,2-Dichloroethane	NT	NT	Caryophyllene Oxide	NT	NT
delta 8-THC	ND	ND	Ethanol	NT	NT	alpha-Cedrene	NT	NT
THCV	ND	ND	Ethyl acetate	NT	NT	Cedrol	NT	NT
CBDA	19.47	194.7	Ethylene oxide	NT	NT	Endo-fenchyl Alcohol	NT	NT
CBD	0.38	3.8	n-Heptane	NT	NT	Eucalyptol	NT	NT
CBD-V	ND	ND	n-Hexane	NT	NT	Fenchone	NT	NT
CBN	ND	ND	iso-Butane	NT	NT	Geraniol	NT	NT
CBG	0.09	0.9	iso-Pentane	NT	NT	Geranyl acetate	NT	NT
CBC	0.03	0.3	Methylene Chloride	NT	NT	Guaiol	NT	NT
Cannabinoids Total			n-Pentane	NT	NT	Hexahydrothymol	NT	NT
Max Active THC	0.72	7.18	Propane	NT	NT	alpha-Humulene	NT	NT
Max Active CBD	17.48	174.81	2-Propanol (IPA)	NT	NT	Isoborneol	NT	NT
T.Active Cannabinoids	0.55	5.45	Tetrahydrofuran	NT	NT	Isopulegol	NT	NT
Total Cannabinoids	20.80	208.00	Toluene	NT	NT	Limonene	NT	NT
Max Active Ratios			Trichloroethane	NT	NT	Linalool	NT	NT
24.44 : 1 CBD to THC			o-xylene	NT	NT	p-Mentha-1,5-diene	NT	NT
0.04 :1 THC to CBD			Xylenes (m,p)	NT	NT	beta-Myrcene	NT	NT

Cannabinoid (%)



Sample Image



Metals	ppm	RL
Compound		
Arsenic	NT	NT
Cadmium	NT	NT
Mercury	NT	NT
Lead	NT	NT
Percent Moisture		
NT %		
Water Activity		
NT		

RL = Reporting Limit
 NA = Not Applicable
 NT = Not Tested
 ND = Non Detected

Sabinene	NT	NT
Sabinene Hydrate	NT	NT
gamma-Terpinene	NT	NT
alpha-Terpinene	NT	NT
alpha-Terpineol	NT	NT
3-Carene	NT	NT
Ocimene Isomer 2	NT	NT
gamma-Terpineol	NT	NT
Terpinolene	NT	NT
Valencene	NT	NT
Nerol	NT	NT
cis-Nerolidol	NT	NT
Total Terpenes	NT	NT